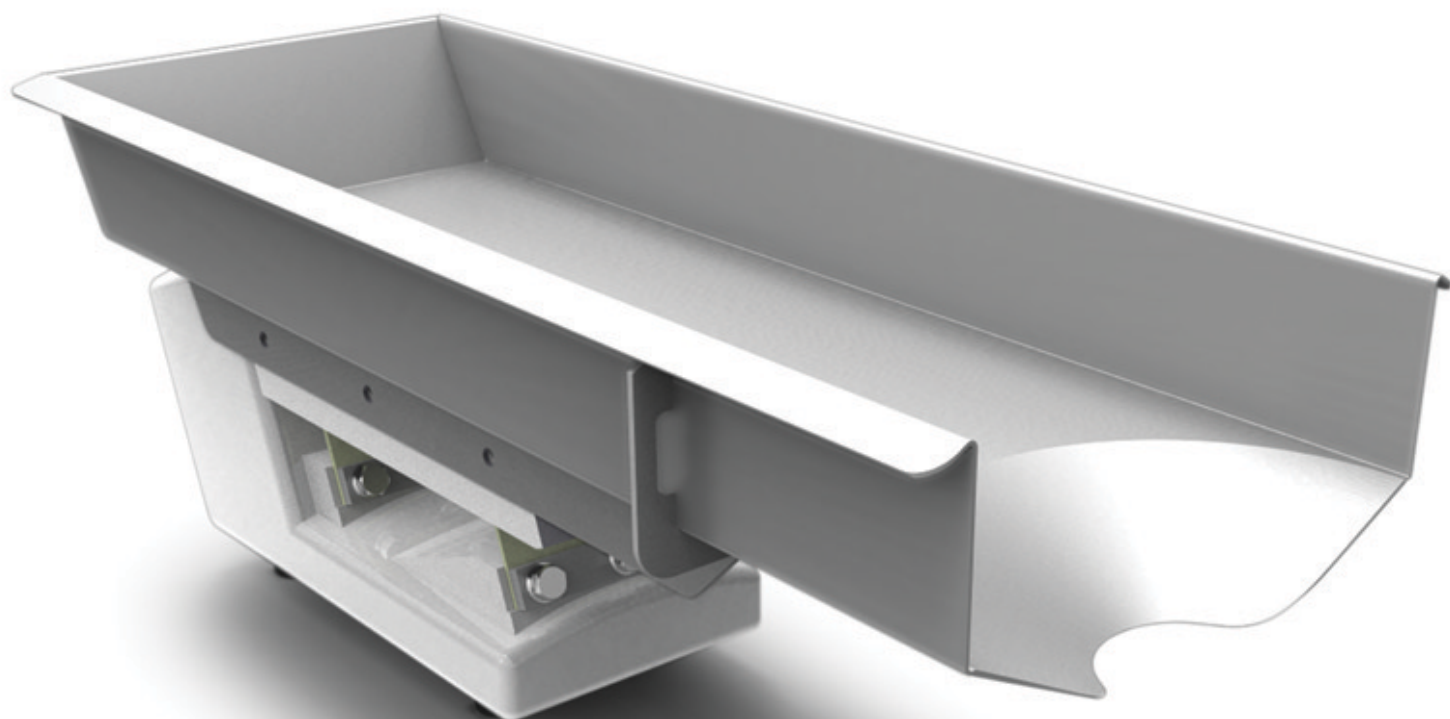
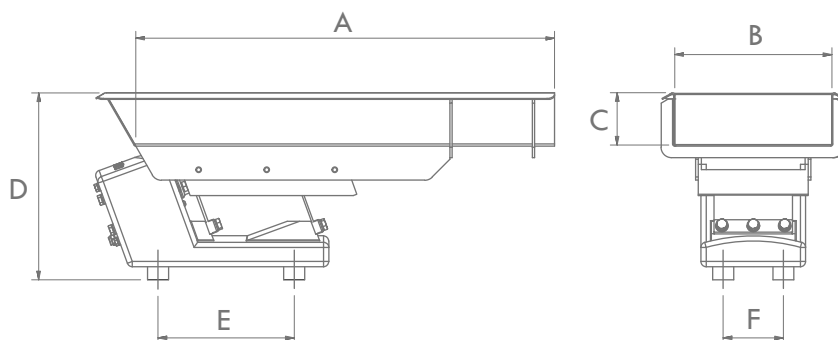
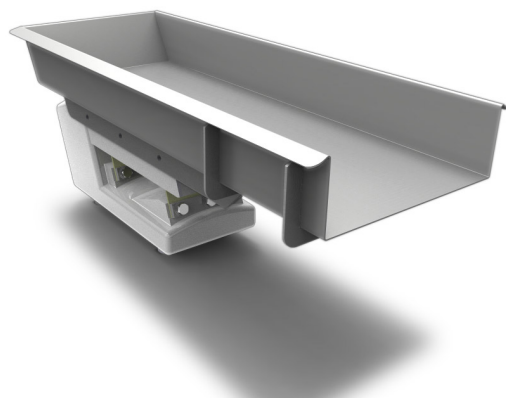




tray options



RECTANGULAR



LD1

	A	B	C	D	E	F
STANDARD	400	150	50	182	180	40
WIDE	250	250	50	182	180	40
LONG	500	100	50	182	180	40
MEDIUM	400	100	50	182	180	40

LD2

	A	B	C	D	E	F
STANDARD	500	200	75	245	60	180
WIDE	400	300	75	245	60	180
LONG	700	175	75	245	60	180
MEDIUM	550	200	75	245	60	180

LD3

	A	B	C	D	E	F
STANDARD	650	275	100	300	215	90
WIDE	500	350	100	300	215	90
LONG	1000	200	100	300	215	90
MEDIUM	850	250	100	300	215	90

LD4

	A	B	C	D	E	F
STANDARD	850	350	100	350	260	115
WIDE	600	400	100	350	260	115
LONG	1500	300	100	350	260	115
MEDIUM	1000	350	100	350	260	115

APPLICATIONS

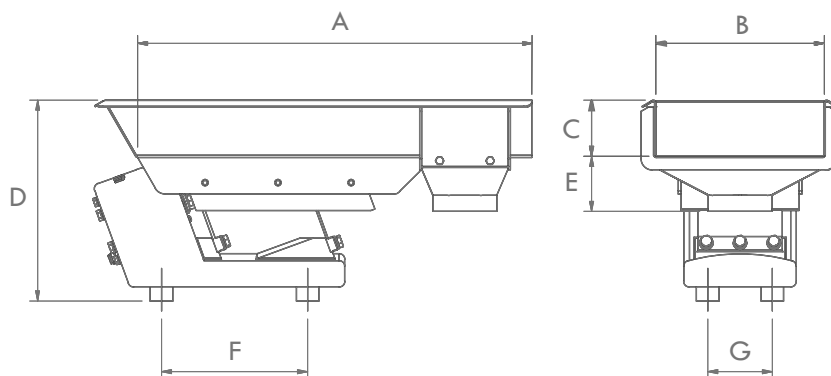
The rectangular tray is the most commonly used tray and allows a reasonable volume of product to be accumulated and fed at constant rates to subsequent processing equipment.

A variety of tray widths, lengths and depths are offered depending on the size of the selected drive.

These trays can be up to 3000mm long and as wide as 1200 mm for spreading applications.

Note: Information presented may be updated without notification. Please consult Enmin if exact dimensions are required

TRAY OPTIONS



A B C D E F G

APPLICATIONS

A B C D E F G

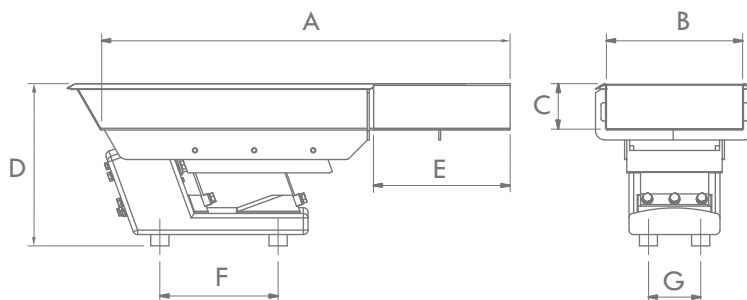
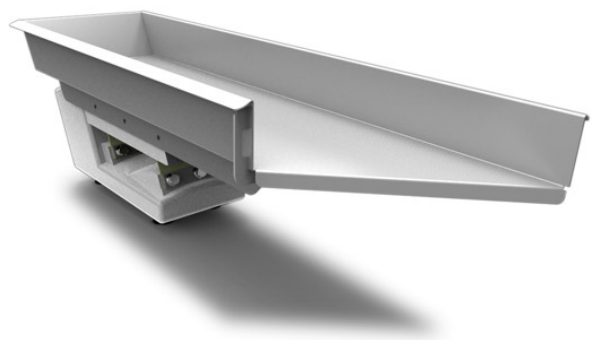
The fines removal tray allows smaller product particles to fall through carefully sized screens, separating the oversized from the undersized.

A	B	C	D	E	F	G
---	---	---	---	---	---	---

Depending on the design of this tray it is possible to screen either undersized or oversized particles for collection/removal.

A	B	C	D	E	F	G
---	---	---	---	---	---	---

Note: Information presented may be updated without notification. Please consult Enmin if exact dimensions are required



LD1

	A	B	C	D	E	F	G
STANDARD	400	150	50	182	212	180	40
WIDE	250	250	50	182	354	180	40
LONG	500	100	50	182	141	180	40
MEDIUM	400	100	50	182	141	180	40

LD2

	A	B	C	D	E	F	G
STANDARD	500	200	75	245	283	180	60
WIDE	400	300	75	245	424	180	60
LONG	700	175	75	245	247	180	60
MEDIUM	550	200	75	245	283	180	60

LD3

	A	B	C	D	E	F	G
STANDARD	650	275	100	300	283	215	90
WIDE	500	350	100	300	424	215	90
LONG	1000	200	100	300	247	215	90
MEDIUM	850	250	100	300	283	215	90

LD4

	A	B	C	D	E	F	G
STANDARD	850	350	100	350	495	260	115
WIDE	600	400	100	350	566	260	115
LONG	1500	300	100	350	424	260	115
MEDIUM	1000	350	100	350	495	260	115

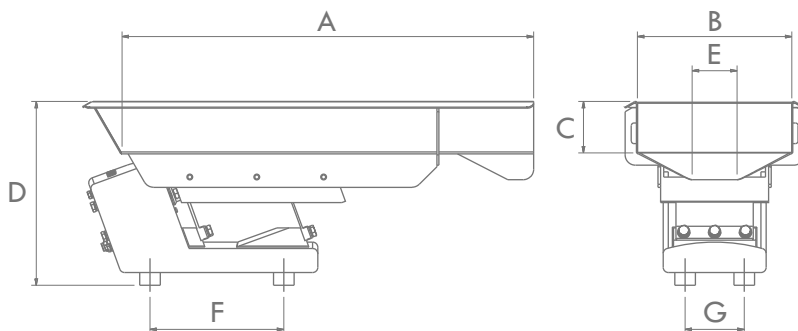
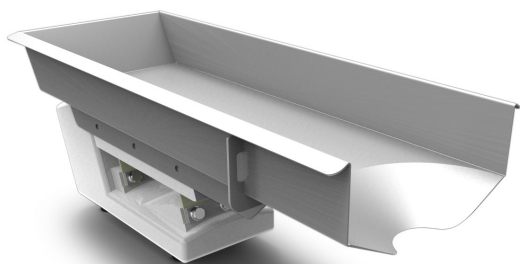
APPLICATIONS

In some applications it is not always possible to feed in-line with the processing equipment. In these instances it is suggested that a bias tray be utilised.

The bias tray option allows the product to be delivered to the secondary processing equipment at any angle, most commonly ninety degrees.

Note: Information presented may be updated without notification. Please consult Enmin if exact dimensions are required

CONICAL



LD1

	A	B	C	D	E	F	G
STANDARD	400	150	50	182	50	180	40
WIDE	250	250	50	182	75	180	40
LONG	500	100	50	182	50	180	40
MEDIUM	400	100	50	182	50	180	40

LD2

	A	B	C	D	E	F	G
STANDARD	500	200	75	245	75	180	60
WIDE	400	300	75	245	100	180	60
LONG	700	175	75	245	75	180	60
MEDIUM	550	200	75	245	75	180	60

LD3

	A	B	C	D	E	F	G
STANDARD	650	275	100	300	100	215	90
WIDE	500	350	100	300	125	215	90
LONG	1000	200	100	300	100	215	90
MEDIUM	850	250	100	300	100	215	90

LD4

	A	B	C	D	E	F	G
STANDARD	850	350	100	350	125	260	115
WIDE	600	400	100	350	150	260	115
LONG	1500	300	100	350	125	260	115
MEDIUM	1000	350	100	350	125	260	115

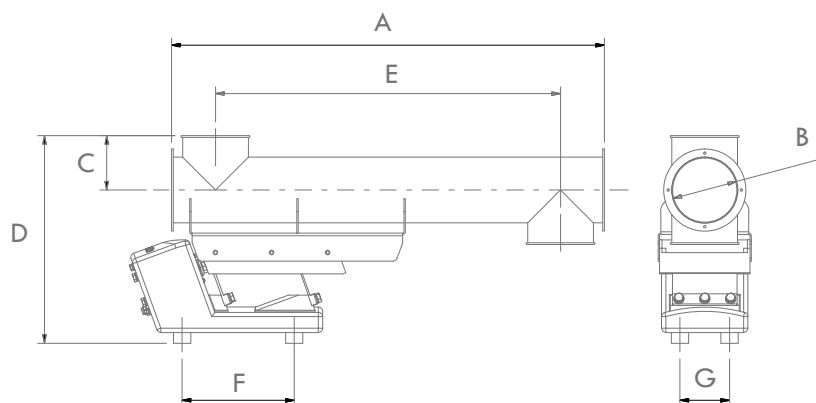
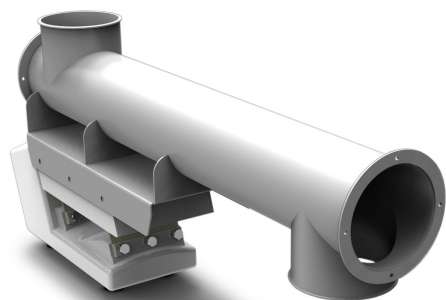
APPLICATIONS

A conical tray is used when it is important for the product stream to exit a feeder centrally. The conical outlet on the tray effectively directs product-fall towards the centre of the tray as it exits.

This is essential when feeding into processing equipment such as Multi-head Weighing machines where uniform product stream onto a distribution cone is required to achieve optimum performance.

Note: Information presented may be updated without notification. Please consult Enmin if exact dimensions are required

TUBULAR



LD1

	A	B	C	D	E	F	G
STANDARD	450	76	76	283	350	180	40
WIDE	400	89	89	296	300	180	40
LONG	500	63.5	63.5	270	400	180	40
MEDIUM	450	76	76	283	350	180	40

APPLICATIONS

The tubular tray option is normally utilised when enclosure of fine, dusty product is required or contamination is of concern.

LD2

	A	B	C	D	E	F	G
STANDARD	650	102	102	370	450	180	60
WIDE	600	127	127	395	400	180	60
LONG	700	89	89	357	500	180	60
MEDIUM	650	102	102	370	450	180	60

These tubes are often fitted with quick release ports at both inlet and outlet to allow ease of inspection and maintenance.

LD3

	A	B	C	D	E	F	G
STANDARD	800	127	127	410	600	215	90
WIDE	700	152	152	435	500	215	90
LONG	900	102	102	385	700	215	90
MEDIUM	800	127	127	410	600	215	90

If necessary, dust extraction ports can be incorporated.

LD4

	A	B	C	D	E	F	G
STANDARD	1100	152	152	482	800	260	115
WIDE	1000	203	203	533	700	260	115
LONG	1200	127	127	457	900	260	115
MEDIUM	1100	152	152	482	800	260	115

Note: Information presented may be updated without notification. Please consult Enmin if exact dimensions are required