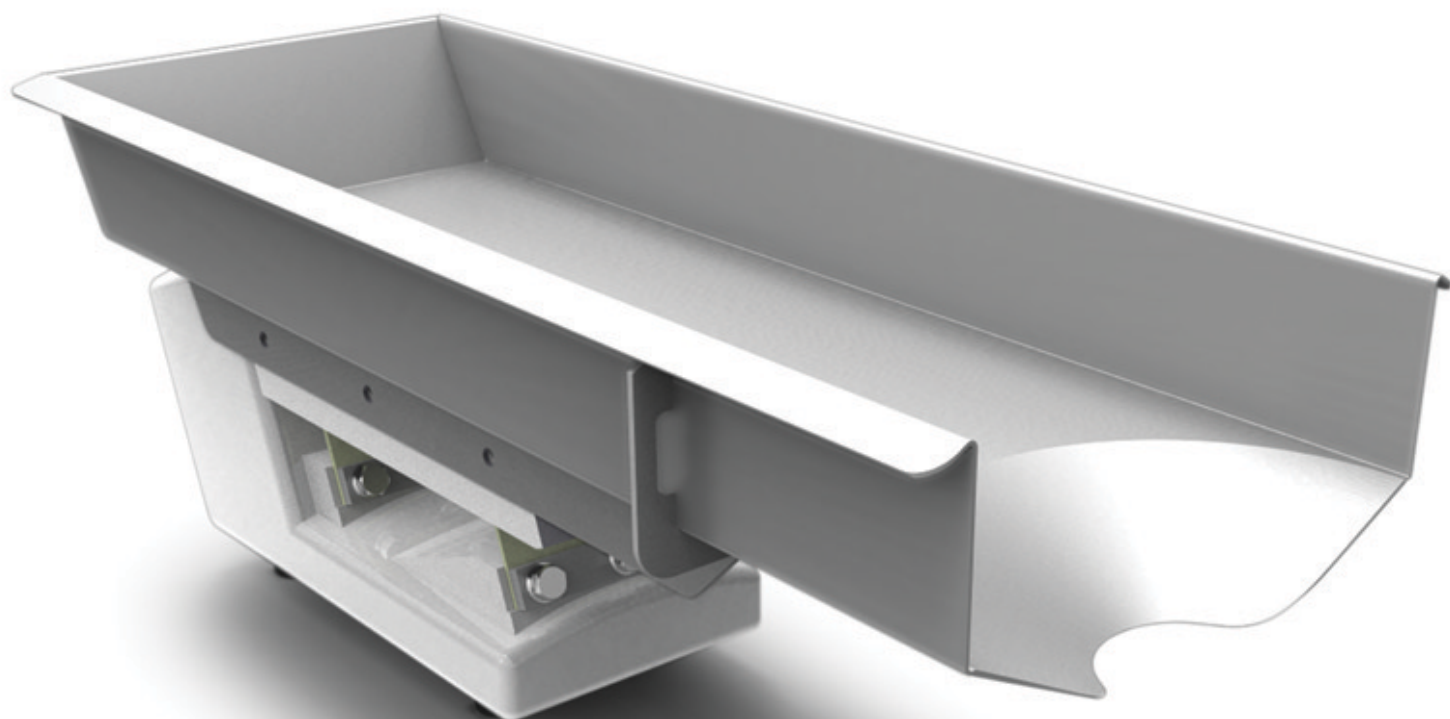
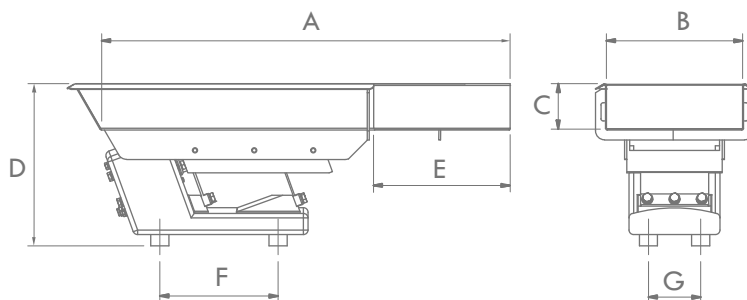
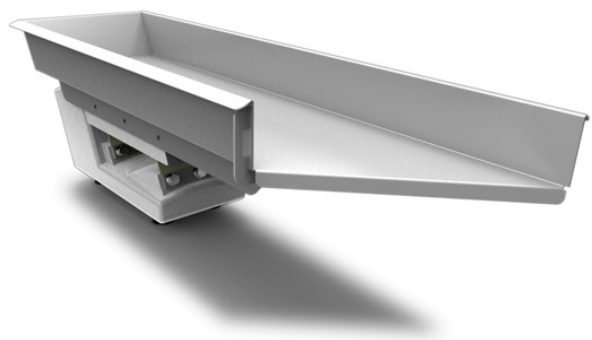




bias tray options



BIAS



LD1

	A	B	C	D	E	F	G
STANDARD	400	150	50	182	212	180	40
WIDE	250	250	50	182	354	180	40
LONG	500	100	50	182	141	180	40
MEDIUM	400	100	50	182	141	180	40

LD2

	A	B	C	D	E	F	G
STANDARD	500	200	75	245	283	180	60
WIDE	400	300	75	245	424	180	60
LONG	700	175	75	245	247	180	60
MEDIUM	550	200	75	245	283	180	60

LD3

	A	B	C	D	E	F	G
STANDARD	650	275	100	300	283	215	90
WIDE	500	350	100	300	424	215	90
LONG	1000	200	100	300	247	215	90
MEDIUM	850	250	100	300	283	215	90

LD4

	A	B	C	D	E	F	G
STANDARD	850	350	100	350	495	260	115
WIDE	600	400	100	350	566	260	115
LONG	1500	300	100	350	424	260	115
MEDIUM	1000	350	100	350	495	260	115

APPLICATIONS

In some applications it is not always possible to feed in-line with the processing equipment. In these instances it is suggested that a bias tray be utilised.

The bias tray option allows the product to be delivered to the secondary processing equipment at any angle, most commonly ninety degrees.

Note: Information presented may be updated without notification. Please consult Enmin if exact dimensions are required